



DEAF  
CULTURE,  
HERITAGE AND  
DIVERSITY

Deaf Studies | Workshop

# Deaf role models and leaders

Deaf educators and researchers

Image  
sources:freepik.com

Funded by the European Union. Views and opinions expressed are however those of the author(s) only and do not necessarily reflect those of the European Union or the European Education and Culture Executive Agency (EACEA). Neither the European Union nor EACEA can be held responsible for them.



**Co-funded by  
the European Union**

# Introduction

- Round of introductions
- Ice Breaker



# Contents - Overview

Objectives of the workshop

Brainstorming: my experiences

Brainstorming: What is a role model anyway?

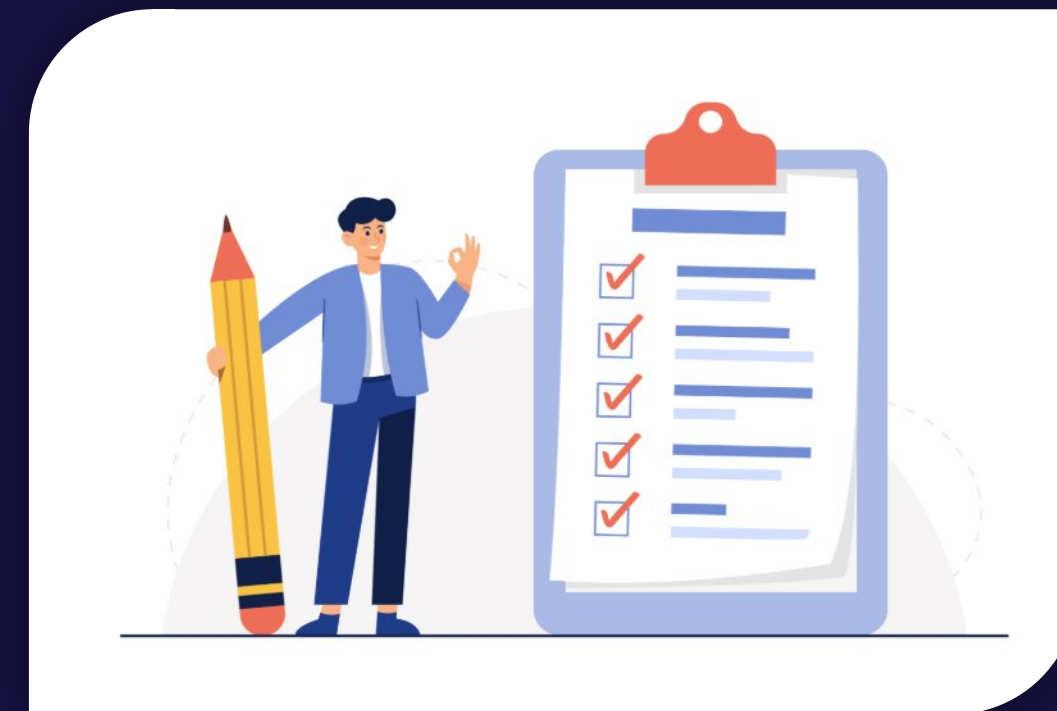
Info: Role models in the field of education and research

Activity: Presentations of the role models

Info: Importance and effect of role models

Reflection & Discussion: Challenges in education and research

- Activity: Developing solutions - the perfect school (inclusion)
- Summary and outlook
- Feedback



# Goals

## Raising awareness

of the role model role in education and research  
(Peer experts)

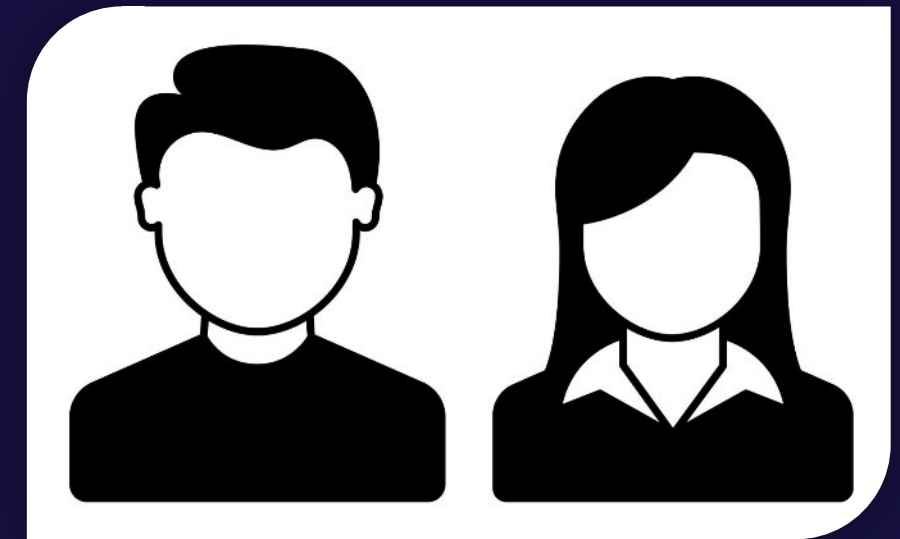


## Reflection on social issues

Promoting the understanding of **inclusion and bilingual learning**



# Brainstorming



Who was your favorite teacher

Why this person?

What skills did he/she have?

Differences to hearing students?



# Brainstorming

Role model - what is it anyway?



# Info: Role models in education and research



**12  
examples**



Co-funded by  
the European Union



# Activity: Presentations



# Activity: Discussion



Summary:  
What did they do/achieve?

Why are they important to  
us?

Highlighting the "common" features.



# Info:

## Role models in the Deaf community

### Meaning

To show that deaf people are in a wide variety of areas successful.

### Effect

- inspiration for other Deaf people
- breaking down prejudices
- increasing inclusive practices in educational institutions



# Reflection: Challenges

## Limited access to resources

(e.g. sign language interpreters, including materials)



## Communication barriers

Lack of use or availability of interpreters and visual aids

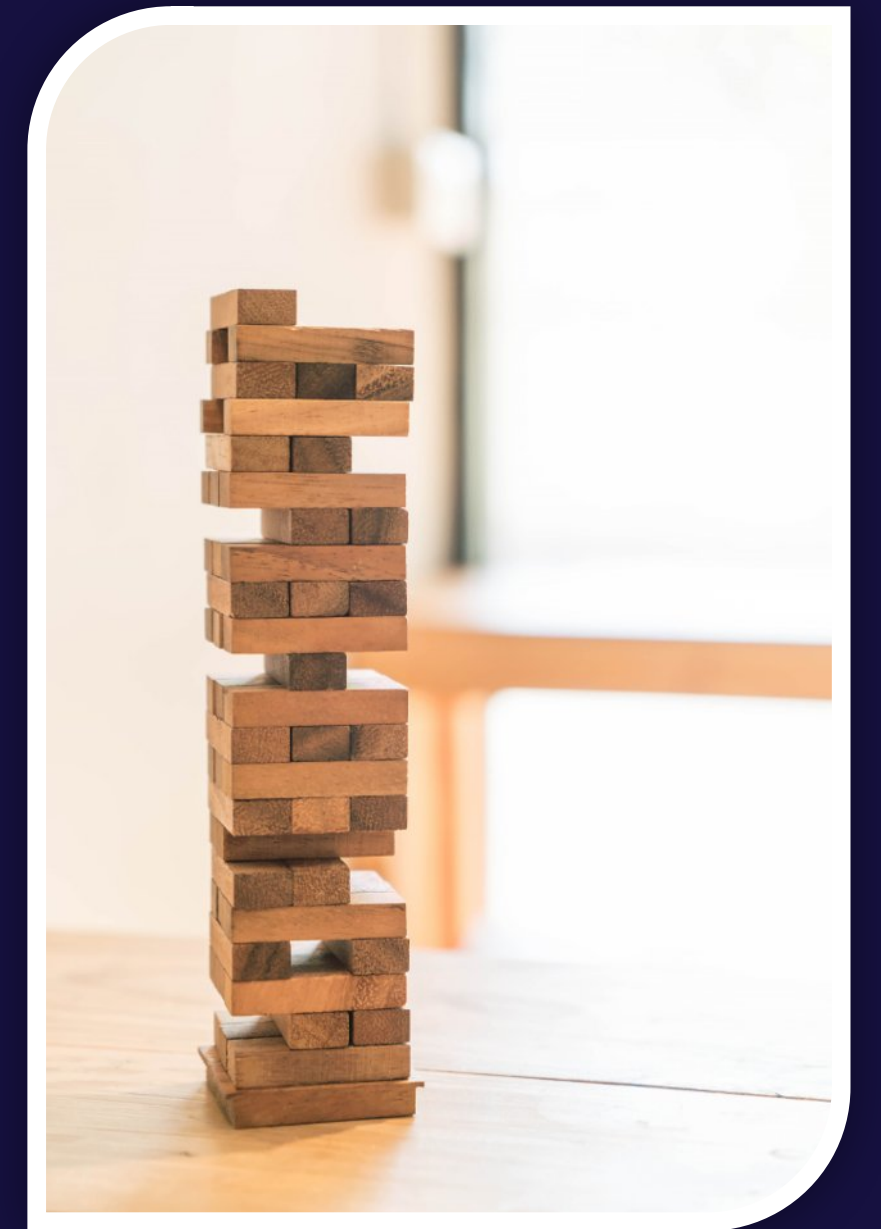


## Social prejudices

Exaggerated expectations, stereotypes, discrimination

## Overcoming these hurdles requires:

inclusive structures, sensitization and empowerment



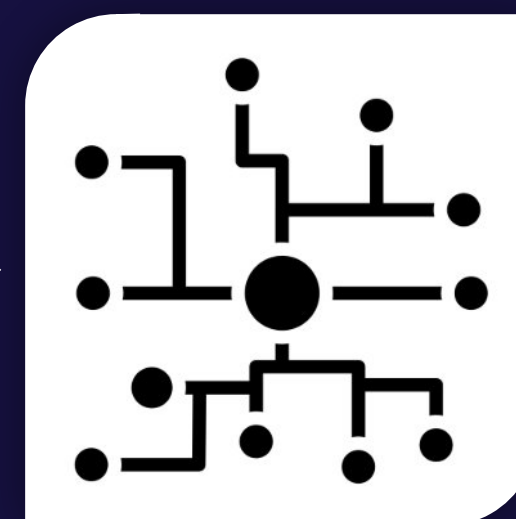
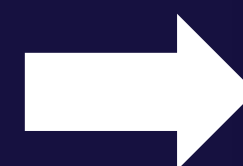
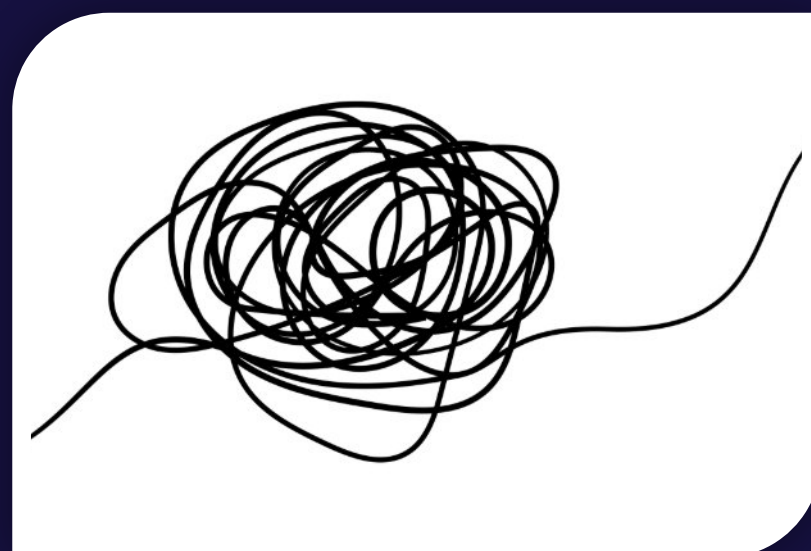
# Discussion, group work, exchange

What barriers exist in my environment?

## Questions:

How can more inclusive structures be created?

How can communication be made more inclusive?



# Developing solutions

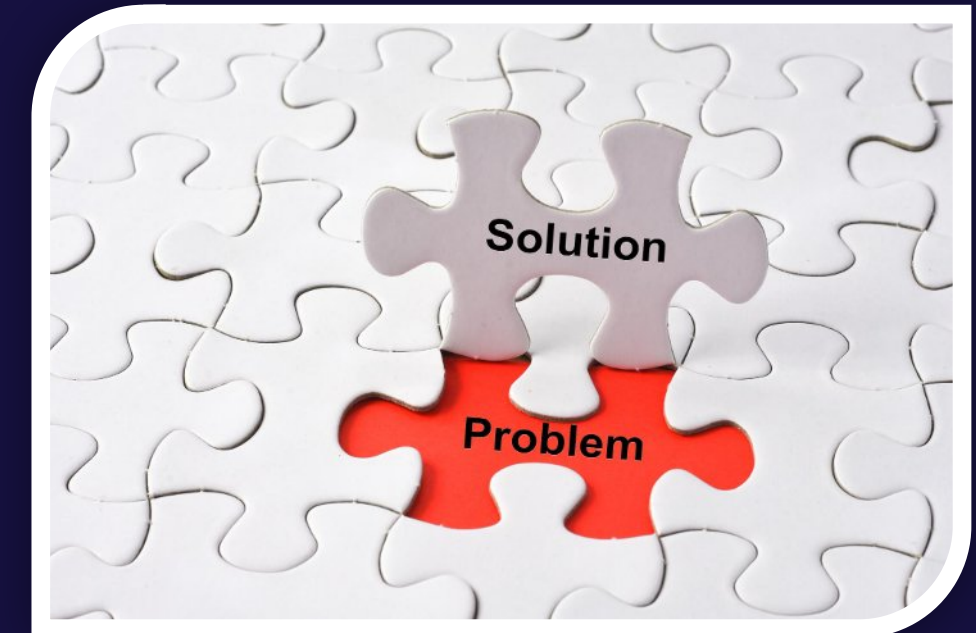
## Consider: the perfect school

In your model school there are Deaf and hearing students.



## What does this school look like?

- How does communication work best?
- What do teachers need to be able to do?
- What do the rooms look like?
- What learning materials?
- What do the rooms look like?



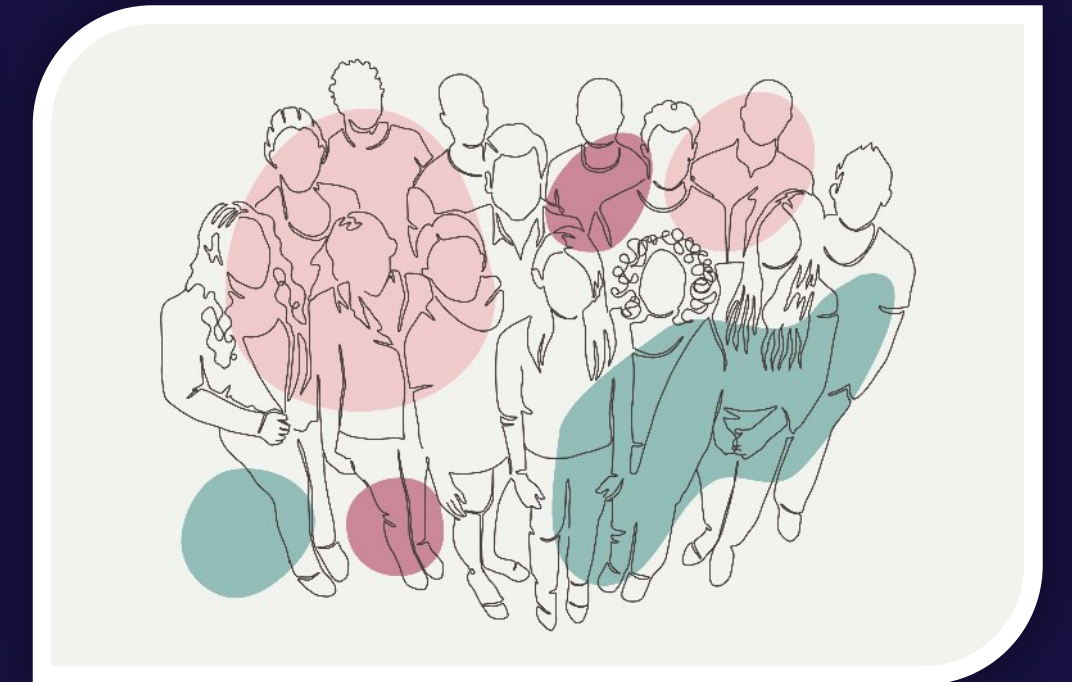
# Summary - Outlook

- Role Models can motivate and change perceptions.
- Inclusive structures and education are necessary!



**Everyone** can contribute to improving the situation:

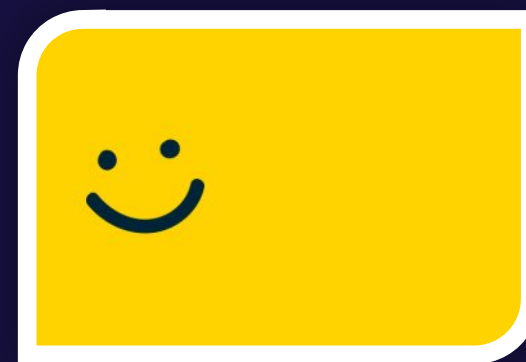
- awareness
- practical measures
- cooperation



# Feedback



Thank you for your attention!



# Contact



<https://deafstudies.eu/>



Deaf Culture, Heritage and Diversity



@deafstudies.eu

**TURKOOIS**



**Innosign**

**Witaf**  
Seit 1865 im Dienste der Gehörlosen

  
equalizent



ISTITUTO DEI SORDI  
DI TORINO