



DEAF  
CULTURE,  
HERITAGE AND  
DIVERSITY

Deaf Studies | Workshop

# Deaf role models and leaders

Deaf educators and researchers

Image  
sources:freepik.com



Co-funded by  
the European Union

# Introduction

- Round of introductions
- Ice Breaker



# Contents - Overview

Objectives of the workshop

Brainstorming: my experiences

Brainstorming: What is a role model anyway?

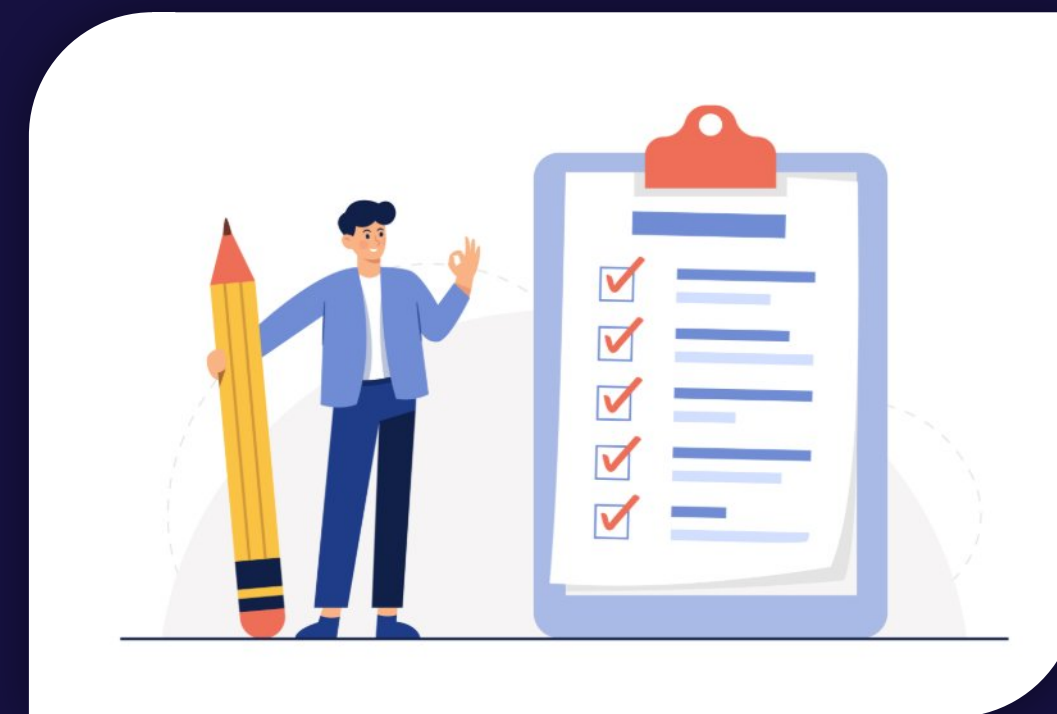
Info: Role models in the field of education and research

Activity: Presentations of the role models

Info: Importance and effect of role models

Reflection & Discussion: Challenges in education and research

- Activity: Developing solutions - the perfect school (inclusion)
- Summary and outlook
- Feedback



# Goals

## Raising awareness

of the role model role in education and research  
(Peer experts)

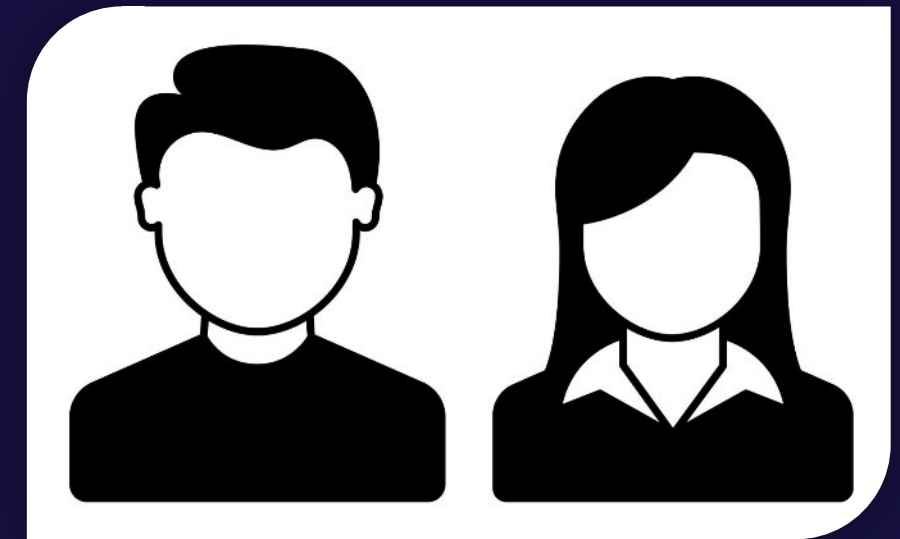


## Reflection on social issues

Promoting the understanding of **inclusion and bilingual learning**



# Brainstorming



Who was your favorite teacher

Why this person?

What skills did he/she have?

Differences to hearing students?

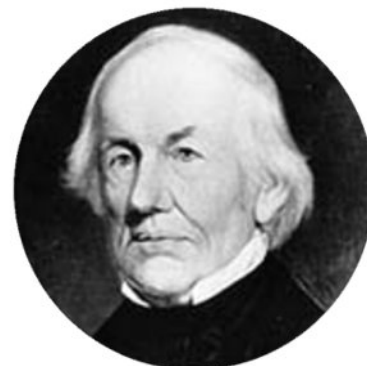


# Brainstorming

Role model - what is it anyway?



# Info: Role models in education and research



**12  
examples**



Co-funded by  
the European Union



# Activity: Presentations



# Activity: Discussion



Summary:  
What did they do/achieve?

Why are they important to  
us?

Highlighting the "common" features.



# Info:

## Role models in the Deaf community

### Meaning

To show that deaf people are in a wide variety of areas successful.

### Effect

- inspiration for other Deaf people
- breaking down prejudices
- increasing inclusive practices in educational institutions



# Reflection: Challenges

## Limited access to resources

(e.g. sign language interpreters, including materials)



## Communication barriers

Lack of use or availability of interpreters and visual aids

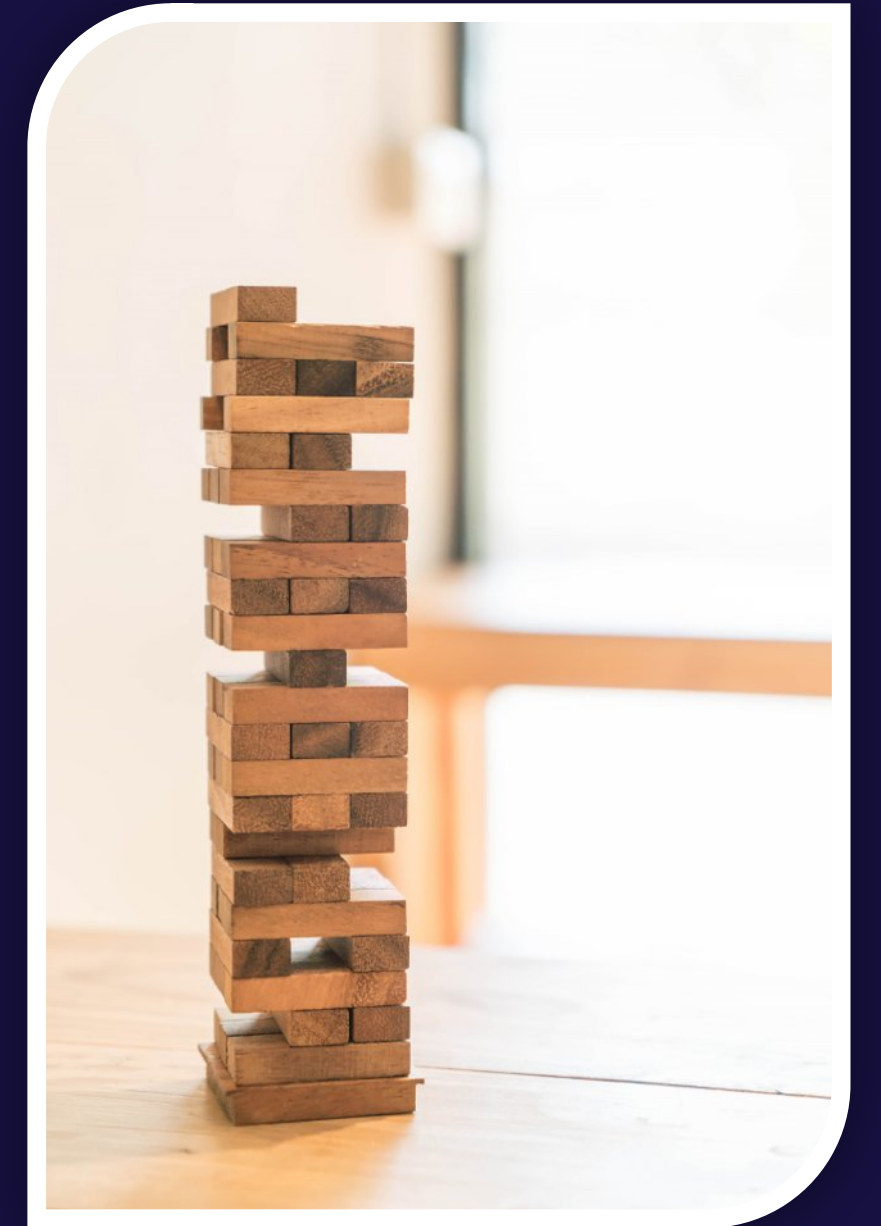


## Social prejudices

Exaggerated expectations, stereotypes, discrimination

## Overcoming these hurdles requires:

inclusive structures, sensitization and empowerment



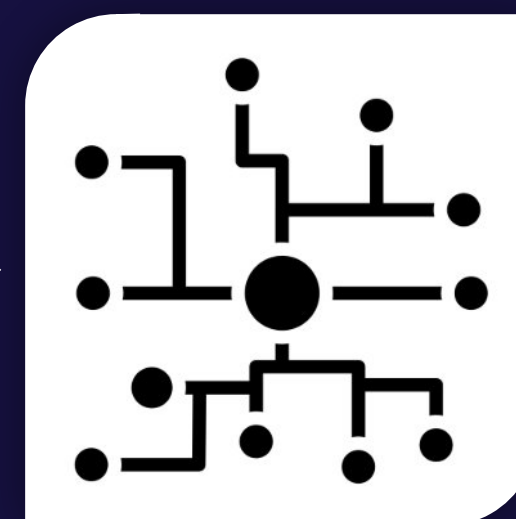
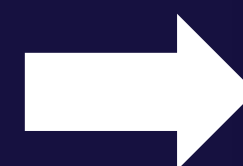
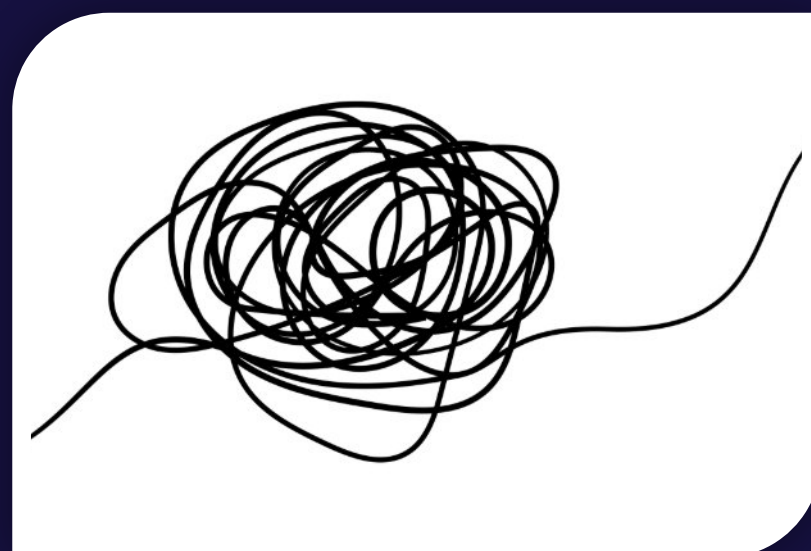
# Discussion, group work, exchange

What barriers exist in my environment?

## Questions:

How can more inclusive structures be created?

How can communication be made more inclusive?



# Developing solutions

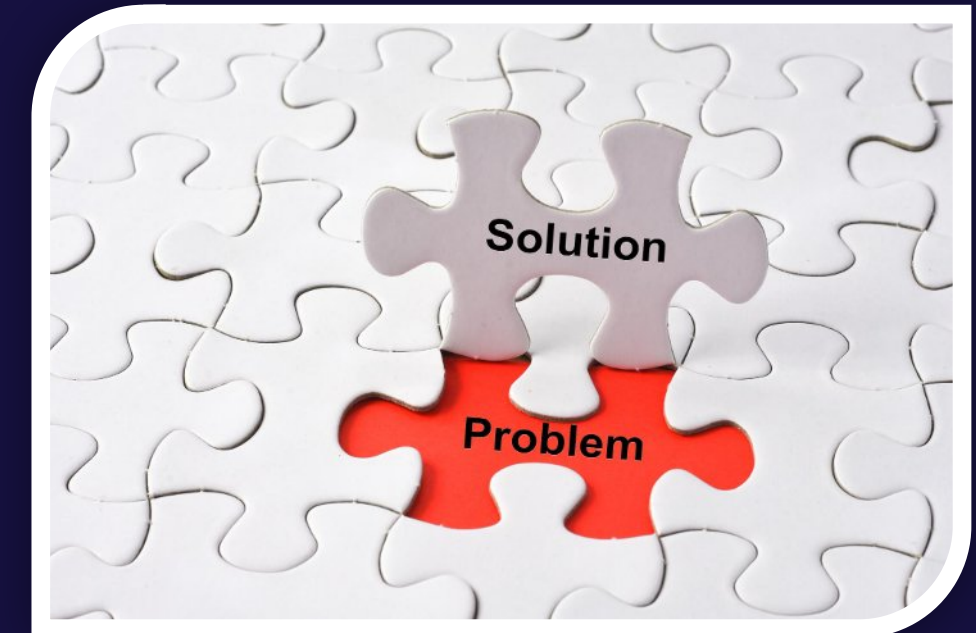
## Consider: the perfect school

In your model school there are Deaf and hearing students.



## What does this school look like?

- How does communication work best?
- What do teachers need to be able to do?
- What do the rooms look like?
- What learning materials?
- What do the rooms look like?



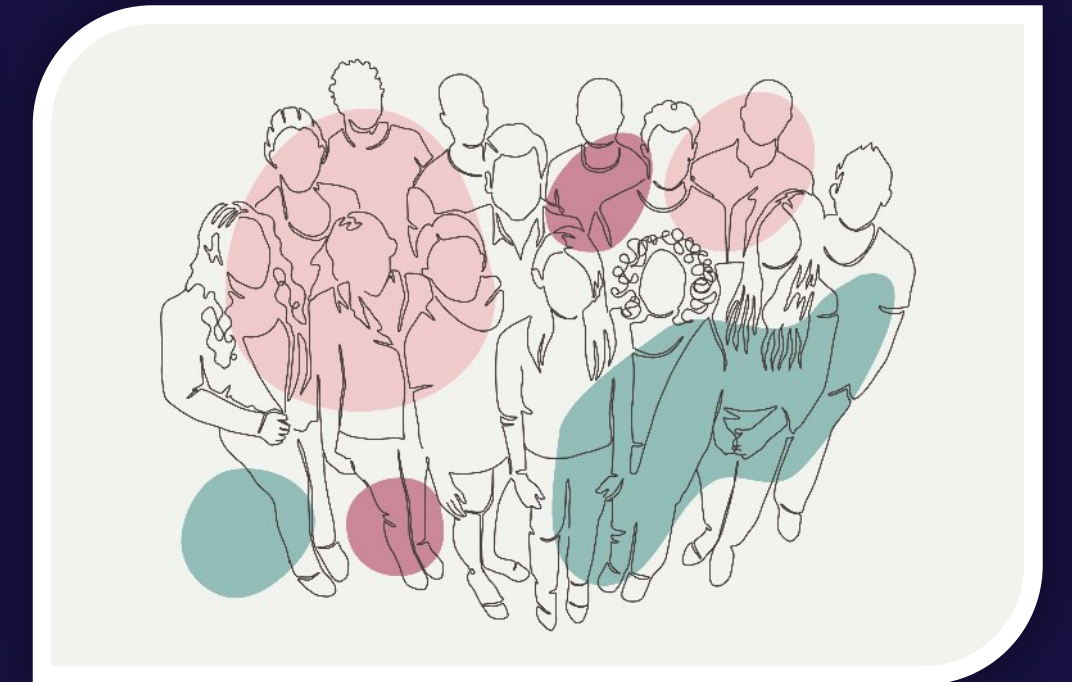
# Summary - Outlook

- Role Models can motivate and change perceptions.
- Inclusive structures and education are necessary!



**Everyone** can contribute to improving the situation:

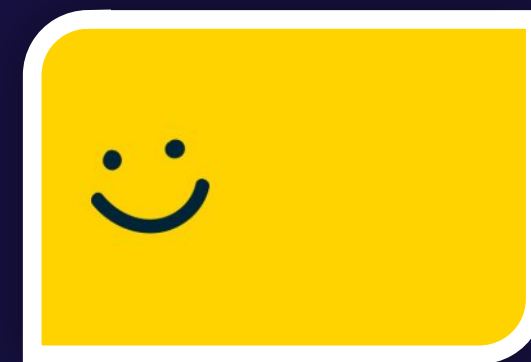
- awareness
- practical measures
- cooperation



# Feedback



Thank you for your attention!



# Contact



<https://deafstudies.eu/>



Deaf Culture, Heritage and Diversity



@deafstudies.eu

**TURKOOIS**



**Innosign**

**Witaf**  
Seit 1865 im Dienste der Gehörlosen

  
equalizent



ISTITUTO DEI SORDI  
DI TORINO